

Micro centrifuge range

Centrifuges offering multiple rotors for varying applications



Micro tubes, Haematocrit,
Blood, urine, sperm tubes
Cytology

2022.2

Welcome to our latest Centrifuge range

Centrifuges focused on the future

Micro ambient & refrigerated version.

Improved rotors for safer sample use

Additional rotors, fixed angles, high speed fixed angles, swing out, micro. and Haematocrit

Fixed angle rotors are now supplied with sealed lids, for ultimate safety.

Huge range of reducers are now available in 2022 for

Fixed angle and Swing out rotors

Next generation components

- Inverter
- Efficient with added power, improved acceleration/deceleration
- **Tachometer/Imbalance**
- Third generation offering improved user flexibility
- **Lid Lock system**
- Superior lid locks for safety and reliability
- **Control Board**
- Easier rotor selection with additional display
- Bluetooth addition allowing latest software updates
- Timer now. 0-99mins, 2, 3, 4, 5, 6, 7, 8, 9, hours & constant

Ambient model

Refrigerated model



Centurion Scientific Ltd Centrifuges comply to all relevant EU standards of quality and medical devices IEC61010 and CE conformity test marks emission, immunity to EN/IEC 61326-1, Class B

PrO-Analytical Centrifuge Features

3

Built to last, these Centrifuges have strong construction yet, offer a sleek modern design that will fit into any modern laboratory.

No compromises on quality, only the best components are used in the manufacturing process.

By working with all our suppliers, our reliability has been retained and improved to give all our range a 2 year warranty as standard.



CE marked and ISO 9001 & 13485

User features to PrO-Analytical series	Advantages
Bright blue LED display	Clarity & ease of use
Rotor recognition	Safe selection of rotors
10 acceleration rates & 10 deceleration rates	Sample assistance
99 program memory	Multi department & Users
Timer 0-9 Hours & Hold in 30 second increments	Total flexibility
Pulse short run	Fast pelleting
Run in speed (rpm) or rcf (G) in 10 rpm increments	Accuracy
Orientation acceleration rate	Prevents initial sample side deposits
Sound <60db (rotor dependent)	Quiet

Standard features to PrO-Analytical series	Advantages
Extra thick stainless steel bowl or acrylic	Easy clean & rust free
Port to lid	Tachometer speed certification
Alloy & steel frame (zinc coated)	Strong light & quiet
World leading industrial grade inverter	Reliability & strength
Best quality European brushless motor	Quiet, cool & reliable
High technology airflow (ambient mode)	Cooler running

All centrifuges have user accessible service sections to access all safety parameters

Safety features to PrO-Analytical series	Advantages
Multi point lid locking	Lid safety
Emergency lid release	Power failure release
Lid Spring Strut	Lid dropping safety
Lid lock detection	To run, lid must be shut
Imbalance detection	Eradicates user loading errors
Overspeed sensor	Safe detection of speed
Set inverter values	Electronic safety of speed
Barrier ring	Safety protection of chamber
Motor overheat sensor	Safe motor protection

Centurion Scientific Ltd Centrifuges comply to all relevant EU standards of quality and medical devices IEC 61010 and CE conformity test marks emission, immunity to EN/IEC 61326-1, Class B

4 Micro Centrifuges to 0.2Litre max Prime multiple rotor use Centrifuge

See pages 12-13 for Dual (single rotor models) complete

Display indicative only



Ambient Centrifuge

Speed	15,000 Rpm max (10Rpm steps)
Rcf Max	10 - 22,000G
Timer	0-9 hours & Hold (30 sec steps)
Dims HWD	235 x 250 x 370mm
Weight	9.8 Kg (without rotor)
Power	125 Watts
Memory	99 programs
Accel rates	10 programs
Decel rates	10 programs

PART NUMBERS Prime model

C1015. 230V 50/60Hz

1.C1015. 110v 60Hz

Rotor required



Refrigerated Centrifuge

Speed	15,000 Rpm max (10Rpm steps)
Rcf Max	10 - 22,000G
Timer	0-9 hours & Hold (30 sec steps)
Dims HWD	280 x 280 x 640mm
Weight	37 Kg (without rotor)
Power	575 Watts
Memory	99 programs
Accel rates	10 programs
Decel rates	10 programs
Temp range	-10C to 40C PID controlled to +/- 1C

PART NUMBERS Prime model

C1015R. 230V 50/60Hz

1.C1015R. 110v 60Hz

Rotor required

Micro rotors to 22,000 Rcf (G)

5



Sealed lid included

Reducers pack of 4

Rotor	BRK5424, BRK5463, BRK5464
Part number	RS04 (0.2- 0.4ml)
Tube size max	6 x 30mm
Part number	RS05 (0.5ml)
Tube size max	8 x 30mm

Rotor	BRK5424	BRK5436	BRK5448	BRK5494
Rotor type	24 x 2.0ml	36 x 0.5ml	48 x 0.2 to 0.4ml	4 x Pcr Strips
Tube size max	11 x 40mm	8 x 30mm	6 x 40mm	6 x 40mm
Minimum Rcf (G)	10	10	10	10
Maximum Rcf (G)	22,000	22,000	22,000	22,000
Maximum Rpm	15,000	15,000	15,000	15,000
Radius max cms	8.75cms	8.75cms	8.75cms	8.75cms
Sample tube angle °	45	45	45	45
Acceleration time (secs)	15	15	15	15
Deceleration time (secs)	15	15	15	15
Autoclavable (frequency)	121°C (10)	121°C (10)	121°C (10)	121°C (10)
Minimum Temperature @ 23°C	4°C	4°C	4°C	4°C

Rotor	BRK5463	BRK5464
Rotor type	36 x 2.0ml	18 x 2.0 & 18x 0.5ml
Tube size max	11 x 40mm	11 x 50 & 8 x 30mm
Minimum Rcf (G)	10	10
Maximum Rcf (G)	22,000	22,000
Maximum Rpm	15,000	15,000
Radius max cms	8.75cms	8.75cms
Sample tube angle °	45	45
Acceleration time (secs)	15	15
Deceleration time (secs)	15	15
Autoclavable (frequency)	121°C (10)	121°C (10)
Minimum Temperature @ 23°C	4°C	4°C

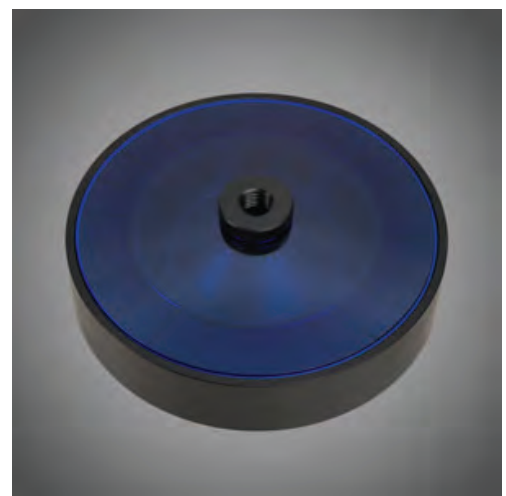
High dome Sealed Lid available Part number B5424SL
Accepts 2ml tubes to 50mm high



6 Haematocrit & Micro rotor to 15,800 Rcf (G)

PCVs for SCBU, Anemia & Vets,

Rotor	BRK5401
Rotor type Tube size max	24 x capillary & 12 x 2ml
Tube size	2 x 75mm & 11 x 40mm
Minimum Rcf (G)	10
Maximum Rcf (G)	15,800
Maximum Rpm	13,000
Radius max cms	8.4
Sample tube angle °	0 & 60
Acceleration time (secs)	25
Deceleration time (secs)	25
Autoclavable (frequency)	121°C (10)
Minimum Temperature @ 23°C	4°C



Consumables

Part Number	Description
8012	Plain capillary tubes pack 10 x 100
8013	Heparinised capillary tubes pack 10 x 100
8014	Sealing clay Pk 10
8011	Rim seal gasket Pk 10 Replace regularly every 2 months

Accessories

Part Number	Description
8003	PCV reader

Small Fixed angle rotors. 3,500 & 6,100 Rcf (G)

7

Blood. Urine, Faeces & larger sample use



Rotor	BRK5407	BRK5408	BRK5404
Rotor type	4 x 15ml & 4 x 10ml	8 x 15ml tube	4 x 50ml tube
Tube size max	17 x 120mm & 13 x 110mm	17 x 120mm	30 x 115mm
Minimum Rcf (G)	10	10	10
Maximum Rcf (G)	6,100	3,500	3,500
Maximum Speed	8,000	6,000	6,000
Radius max cms	8.5	8.5	8.5
Sample tube angle °	30	30	30
Acceleration time (secs)	25	25	25
Deceleration time (secs)	25	25	25
Autoclavable (frequency)	121°C (10)	121°C (10)	121°C (10)
Minimum Temperature @ 23°C	4°C	4°C	4°C

See the following pages for reducers, allowing a vast range of tube use ability



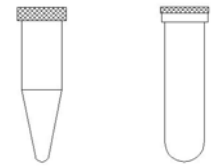
Sealed lid available, use in refrigerated model only
Part number B524SL

Reducers Fixed angle rotor BRK5408 Pack of 4 (Tubes per rotor 8)

Capacity **Size. mm** **Part Number** **Rcf (G) max**

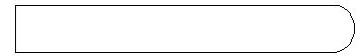
Tube type: Micro with cap. Shape: Point

0.2ml	6 x 20	RS.620	2250
0.4ml	6 x 30	RS.630	2410
0.5ml	8 x 20	RS.820	2250
1.5ml	11 x 38	RS.1138	2540
2.0ml	11 x 38	RS.1138	2540



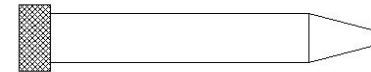
Tube type: Plain no cap. Shape: Round

1ml	6 x 45	RS.645	2660
3ml	10 x 60	RS.1060	2940
5ml	12 x 75	RS.1275	3180
6ml	12 x 82	RS.1282	3300
7ml	12 x 100	RS.12100	3500
9/10ml	14 x 100	RS.14100	3500
15ml	17 x 100	Not required	3500



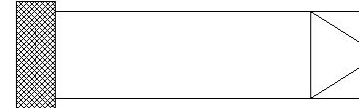
Tube type: Falcon with cap. Shape: Point

15ml	17 x 120	Not required	3500
------	----------	--------------	------



Tube type: Falcon with cap. Shape: Square

12ml	17 x 100	Not required	3500
15ml	17 x 120	Not required	3500



Tube type: Nalgene. Oakridge with cap. Shape: Round

10ml	15 x 80	RS.1580	3500
------	---------	---------	------



Tube type: Monovette. Shape Square

1.1-1.4ml	8 x 82	RU.882	3300
2.7-3ml	11 x 82	RU.1182	3300
2.6-2.9ml	13 x 81	RU.1381	3500
4.5-5ml	11 x 108	RU.11108	3500
7.5-8.2ml	13 x 106	RU.13106	3500
4.5-5ml	15 x 92	RU.1592	3500
9-10ml	16 X 108	Not required	3500



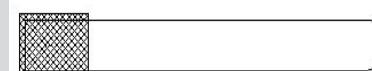
Tube type: Vacutainer. Shape: Round

1.6-5ml	13 x 82	RU.1382	3300
4-7ml	13 x 106	RU.13106	3500
7-9ml	15 x 92	RU.1592	3500
8.5-10ml	16 x 108	Not required	3500



Tube type: Vacuette. Shape: Round

1.6-5ml	13 x 82	RU.1382	3300
4-7ml	13 x 106	RU.13106	3500
7-9ml	15 x 92	RU.1592	3500
8.5-10ml	16 x 108	Not required	3500

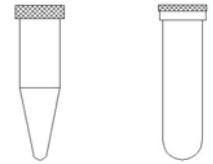


Reducers Fixed angle rotor BRK5404 Pack of 4 (tubes per rotor 4)

Capacity **Size. mm** **Part Number** **Rcf (G) max**

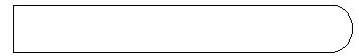
Tube type: Micro with cap. Shape: Point

0.2ml	6 x 20	RSB.620	2250
0.4ml	6 x 30	RSB.630	2410
0.5ml	8 x 20	RSB.820	2250
1.5ml	11 x 38	RSB.1138	2540
2.0ml	11 x 38	RSB.1138	2540



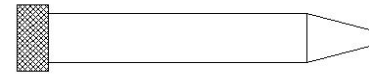
Tube type: Plain no cap. Shape: Round

1ml	6 x 45	RSB.645	2660
3ml	10 x 60	RSB.1060	2940
5ml	12 x 75	RSB.1275	3180
6ml	12 x 82	RSB.1282	3300
7ml	12 x 100	RSB.12100	3500
9/10ml	14 x 100	RSB.14100	3500
15ml	17 x 100	RSB.17100	3500
25ml	24 x 100	RSB.24100	3500



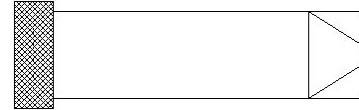
Tube type: Falcon with cap. Shape: Point

15ml	17 x 120	RUB.17120	3500
50ml	29 x 115	Not required	3500



Tube type: Falcon with cap. Shape: Square

12ml	17 x 100	RUB.17100	3500
15ml	17 x 120	RUB.17120	3500
25ml	25 x 90	RUB.2590	3500
30ml	25 x 110	RUB.25110	3500
50ml	29 x 115	Not required	3500



Tube type: Nalgene. Oakridge with cap. Shape: Round

10ml	15 x 80	RUB.1580	3300
30ml	26 x 95	RUB.2695	3500
50ml	29 x 107	Not required	3500



Tube type: Monovette. Shape Square

1.1-1.4ml	8 x 82	RUB.882	3300
2.7-3ml	11 x 82	RUB.1182	3300
2.6-2.9ml	13 x 81	RUB.1381	3300
4.5-5ml	11 x 108	RUB.11108	3500
7.5-8.2ml	13 x 106	RUB.13106	3500
4.5-5ml	15 x 92	RUB.1592	3500
9-10ml	16 X 108	RUB.16108	3500



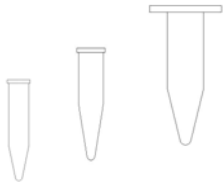
Tube type: Vacutainer. Shape: Round

1.6-5ml	13 x 82	RUB.1382	3300
4-7ml	13 x 106	RUB.13106	3500
7-9ml	15 x 92	RUB.1592	3500
8.5-10ml	16 x 108	RUB.16108	3500



Tube type: Vacuette. Shape: Round

1.6-5ml	13 x 82	RUB.1382	3300
4-7ml	13 x 106	RUB.13106	3500
7-9ml	15 x 92	RUB.1592	3500
8.5-10ml	16 x 108	RUB.16108	3500



10 Small Swing out Rotor 1520 Rcf (G)



BRK5508S Rotor Buckets supplied (set of 8)

Capacity	8 x 5ml
Tube size	13 x 82mm max
Minimum Rcf (G)	10
Maximum Rcf (G)	1,520
Maximum Speed	4,000
Radius max cms	8.5
Sample tube angle °	0
Acceleration time (secs)	15
Deceleration time (secs)	15
Autoclavable (frequency)	121°C (10)
Minimum Temperature @ 23°C	4°C

Ideal for small Blood samples or 4.5ml general samples

Reducers Swing out rotor BRK5508S Pack of 4 (Tubes per rotor 8)

Capacity **Size. mm** **Part Number** **Rcf (G) max**

Tube type: Micro with cap. Shape: Point

0.2ml	6 x 20	RS.620	800
0.4ml	6 x 30	RS.630	1000
0.5ml	8 x 20	RS.820	800
1.5ml	11 x 38	RS.1138	1100
2.0ml	11 x 38	RS.1138	1100

Tube type: Plain no cap. Shape: Round

1ml	6 x 45	RS.645	1300
3ml	10 x 60	RS.1060	1520
5ml	12 x 75	RS.1275	1520
6ml	12 x 82	RS.1282	1520

Tube type: Nalgene. Oakridge with cap. Shape: Round

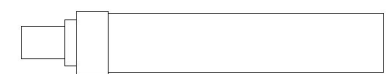
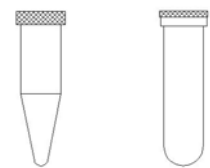
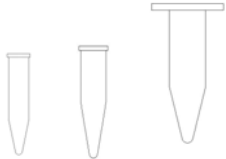
10ml	15 x 80	RS.1580	1520
------	---------	---------	------

Tube type: Monovette. Shape Square

1.1-1.4ml	8 x 82	RU.882	1520
2.7-3ml	11 x 82	RU.1182	1520
2.6-2.9ml	13 x 81	RU.1381	1520

Tube type: Vacutainer. Shape: Round

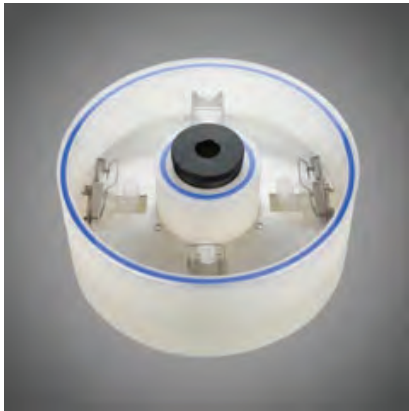
1.6-5ml	13 x 82	RU.1382	1520
---------	---------	---------	------



Cytology rotor to 550Rcf (G)

11

Cytology and Histology work *Refrigerated model only*



Lid is in blue

Rotor	4940 (4 Place)
Rotor type	4 x 0.2 to 6ml
Tube size max	Single or double
Minimum Rcf (G)	10
Maximum Rcf (G)	550
Maximum Speed	2,500
Radius max cms	7.9
Sample tube angle °	0
Acceleration time (secs)	20
Deceleration time (secs)	20
Autoclavable (frequency)	121°C (10)
Minimum Temperature @ 23°C	4°C

Cytology rotor includes rotor, sealed lid, clips, 24 holders with filter card & 100 slides

Accessories



4446

Double sample holder with card (up to 1ml)



4444

Single sample holder with card (up to 1ml)



4600

Single sample holder with card (up to 6ml)



4462

Stainless steel clips

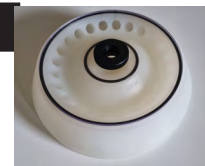
12 Micro Ambient Centrifuge and one rotor.

(one rotor use only).

DUAL MODEL

Micro tube rotors see page 5

Part nos. 230v 50/60Hz	Part nos. 110v 60Hz	Rotor. 22,000 Rcf (G)	
C115A	1.C115A	BRK5424	24 x 2ml
C115B	1.C115B	BRK5436	36 x 0.5ml
C115C	1.C115C	BRK5448	48 x 0.2ml
C115D	1.C115D	BRK5494	4 x PCR
C115E	1.C115E	BRK5463	36 x 2ml
C115F	1.C115F	BRK5464	18 x 2ml & 18 x .5ml



Haematocrit rotor page 6

Part nos. 230v 50/60Hz	Part nos. 110v 60Hz	Rotor. 15,800 Rcf (G)	
C113A	1.C113A	BRK5401	24 x capillary 12 x 2ml



Fixed angle rotors page 7

Part nos. 230v 50/60Hz	Part no. 110v 60Hz	Rotor. 3,500 Rcf (G)	
C106A	1.C106A	BRK5408	8 x 15ml
C106B	1.C106B	BRK5404	4 x 50ml
C106C	1.C106C	BRK5407	4 x 15ml
		6,100 Rcf	4 x 10ml



Swing out rotor page 10

Part nos. 230v 50/60Hz	Part nos. 110v 60Hz	Rotor. 1520 Rcf (G)	
C104SO	1.C104SO	5508S	8 x 4.5ml



Cytology rotor page 11

Part nos. 230v 50/60Hz	Part nos. 110v 60Hz	Rotor. 550Rcf (G)	
C104CYT	1.C104CYT	4420	4 x dual



HS Fixed angle rotors

Part nos. 230v 50/60Hz	Part nos. 110v 60Hz	Rotor.
------------------------	---------------------	--------

Not available

Micro Refrigerated centrifuge and one rotor 13

(one rotor use only)

DUAL MODEL

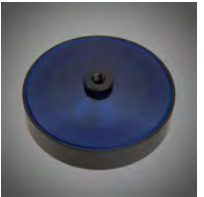
Micro tube rotors see page 5

Part nos. 230v 50/60Hz	Part nos. 110v 60Hz	Rotor. 22,000 Rcf (G)	
C115RA	1.C115RA	BRK5424	24 x 2ml
C115RB	1.C115RB	BRK5436	36 x 0.5ml
C115RC	1.C115RC	BRK5448	48 x 0.2ml
C115RD	1.C115RD	BRK5494	4 x PCR
C115RE	1.C115RE	BRK5463	36 x 2ml
C115RF	1.C115RF	BRK5464	18 x 2ml & 18 x .5ml



Haematocrit rotor page 6

Part nos. 230v 50/60Hz	Part nos. 110v 60Hz	Rotor. 15,800 Rcf (G)	
C113RA	1.C113RA	BRK5401	24 x capillary 12 x 2ml



Fixed angle rotors page 7

Part nos. 230v 50/60Hz	Part no. 110v 60Hz	Rotor. 3,500 Rcf (G)	
C106RA	1.C106RA	BRK5408	8 x 15ml
C106RB	1.C106RB	BRK5404	4 x 50ml
C106RC	1.C106RC	BRK5407	4 x 15ml
		6,100 Rcf	4 x 10ml



Swing out rotor page 10

Part nos. 230v 50/60Hz	Part nos. 110v 60Hz	Rotor. 1520 Rcf (G)	
C104RSO	1.C104RSO	5508S	8 x 4.5ml



Cytology rotor page 11

Part nos. 230v 50/60Hz	Part nos. 110v 60Hz	Rotor. 550Rcf (G)	
C104RCYT	1.C104RCYT	4420	4 x dual



HS Fixed angle rotors

Part nos. 230v 50/60Hz	Part nos. 110v 60Hz	Rotor.
------------------------	---------------------	--------

Not available

NOTE. Domed blue lids, as shown, available on refrigerated centrifuges only



WolfLabs

Pricing on any accessories shown can be found by keying the part number into the search box on our website.

The specifications listed in this brochure are subject to change by the manufacturer and therefore cannot be guaranteed to be correct. If there are aspects of the specification that must be guaranteed, please provide these to our sales team so that details can be confirmed.

www.wolflabs.co.uk

Tel : 01759 301142

Fax : 01759 301143

sales@wolflabs.co.uk

Please contact us if this literature doesn't answer all your questions.